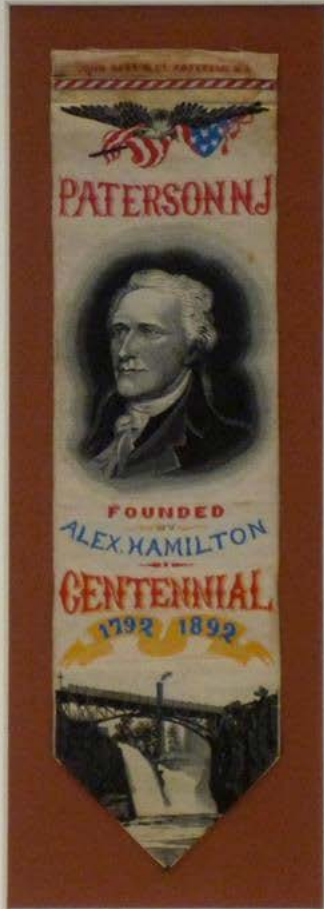


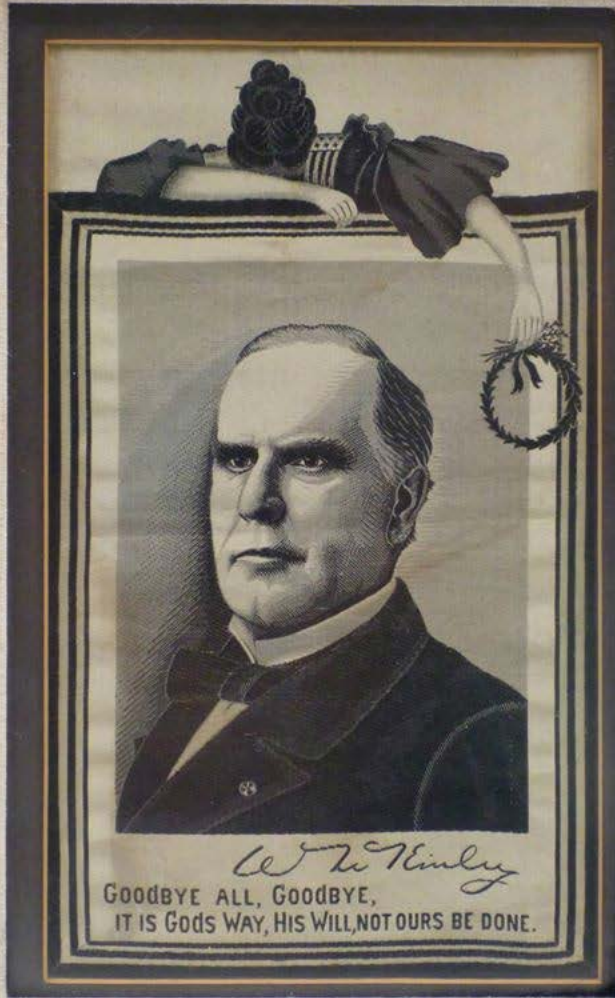
Paterson-The Silk City

ARTH 3330 Silk Road Art

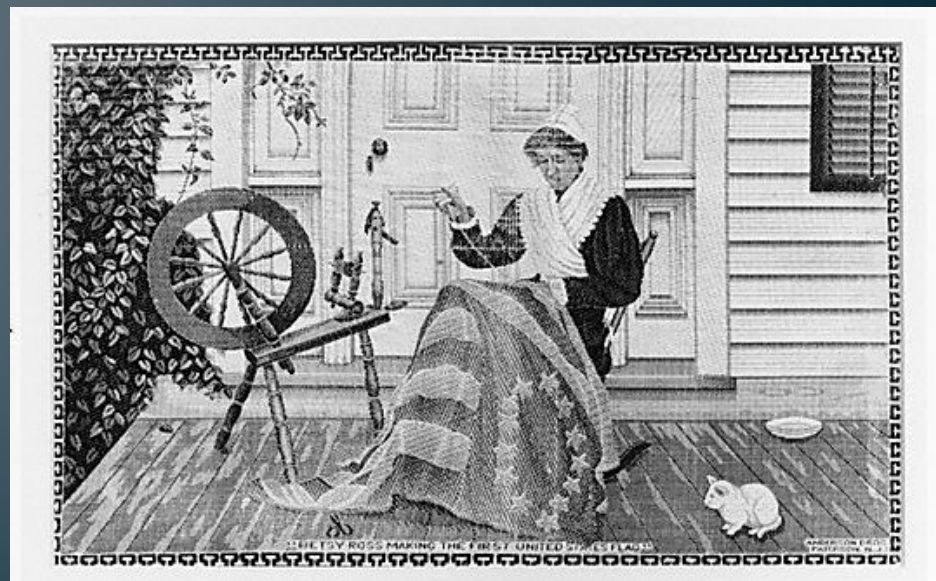
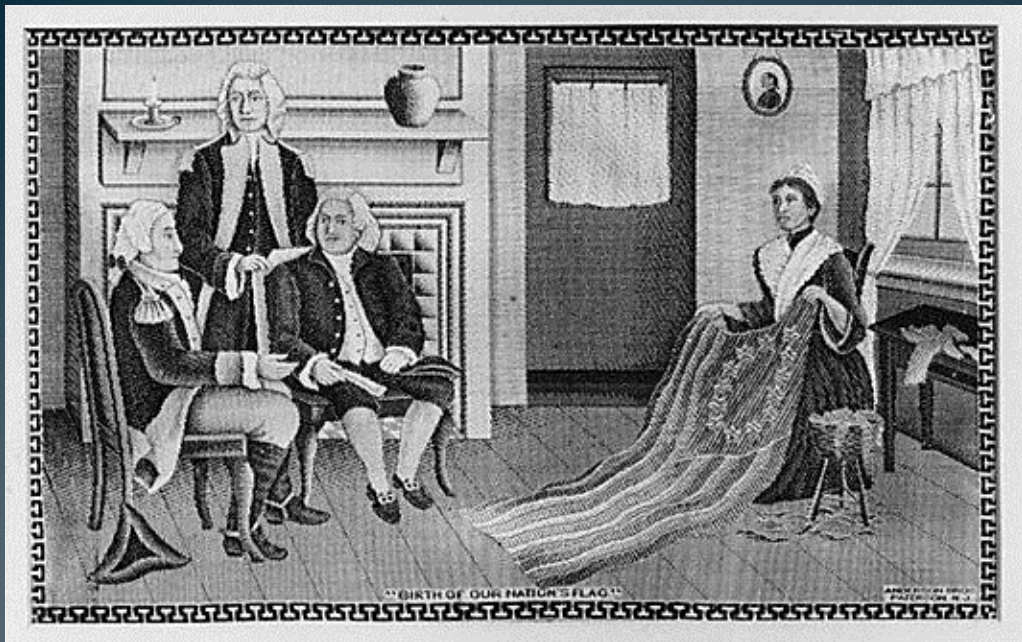
ZhangH@WPUNJ.edu







W. W. Hinley
GOODBYE ALL, GOODBYE,
IT IS GODS WAY, HIS WILL, NOT OURS BE DONE.





RESTROOM →

**SOFT SILK
SKEIN WINDER**
OFF of Wally Thompson















JACQUARD HEAD
APPROXIMATE YEAR
CIRCA 1870
Gift of P. Schwaner, etc.

JACQUARD
C/S LOOM
APPROXIMATE YEAR
CIRCA 1870
Gift of P. Schwaner, etc.



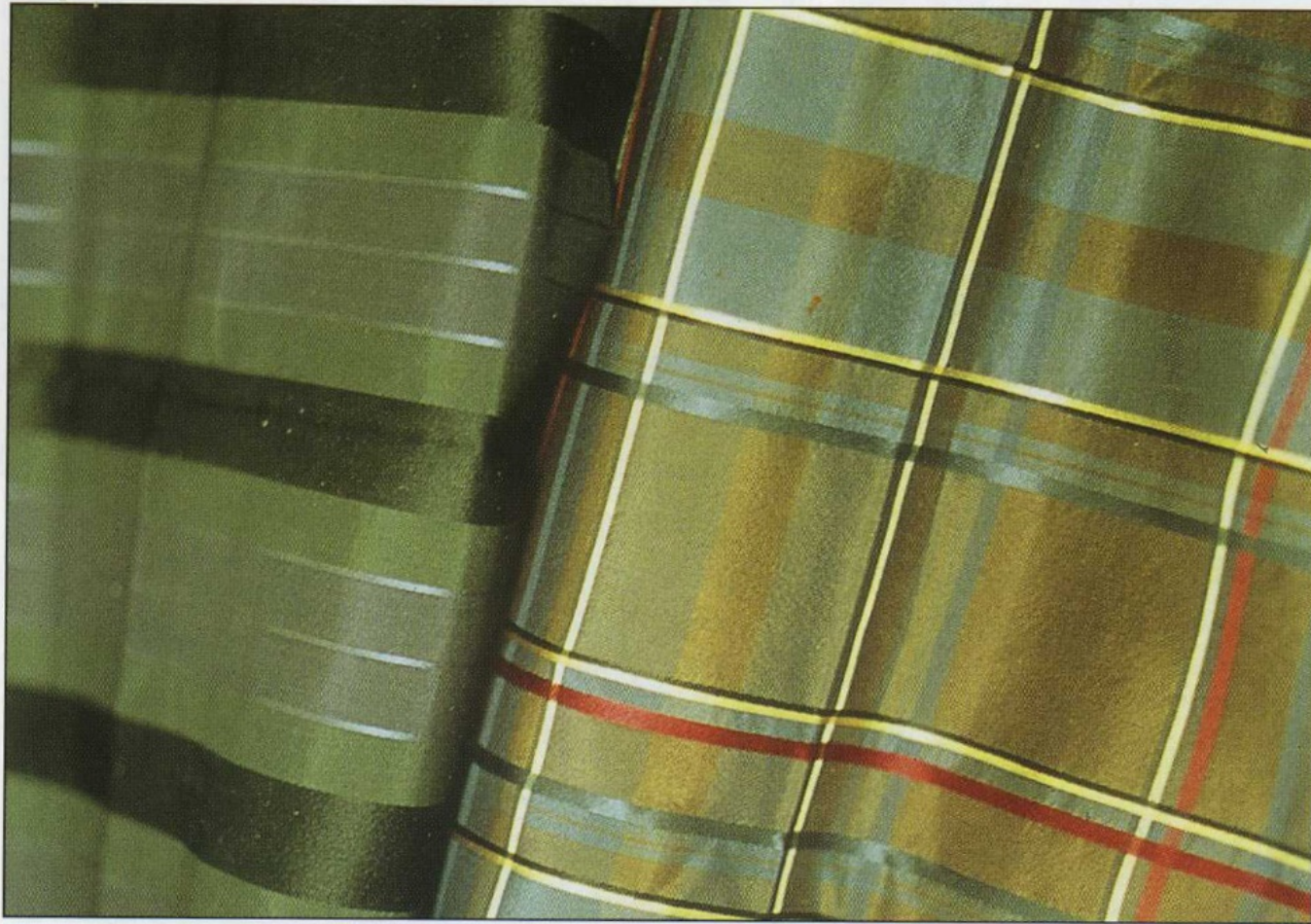
**JACQUARD
OFS LOOM**
CROMPTON AND KNOWLES LOOM WORKS
WORCESTER, MASS.
CIRCA-1970
Gift of F. Schumacher & Co



Skeins of weaving yarn made from Japanese raw silk. From left: lustrous bleached white; dull white still in the gum; white boiled off three thread tram; light pink and light blue eight thread tram; yellow eight thread tram; less lustrous red, green and black spun or schappe silk; lustrous pink tram. *Courtesy The Collection of the Newark Museum. Gift of the National Silk Dyeing Company, Paterson, New Jersey, 1916.*



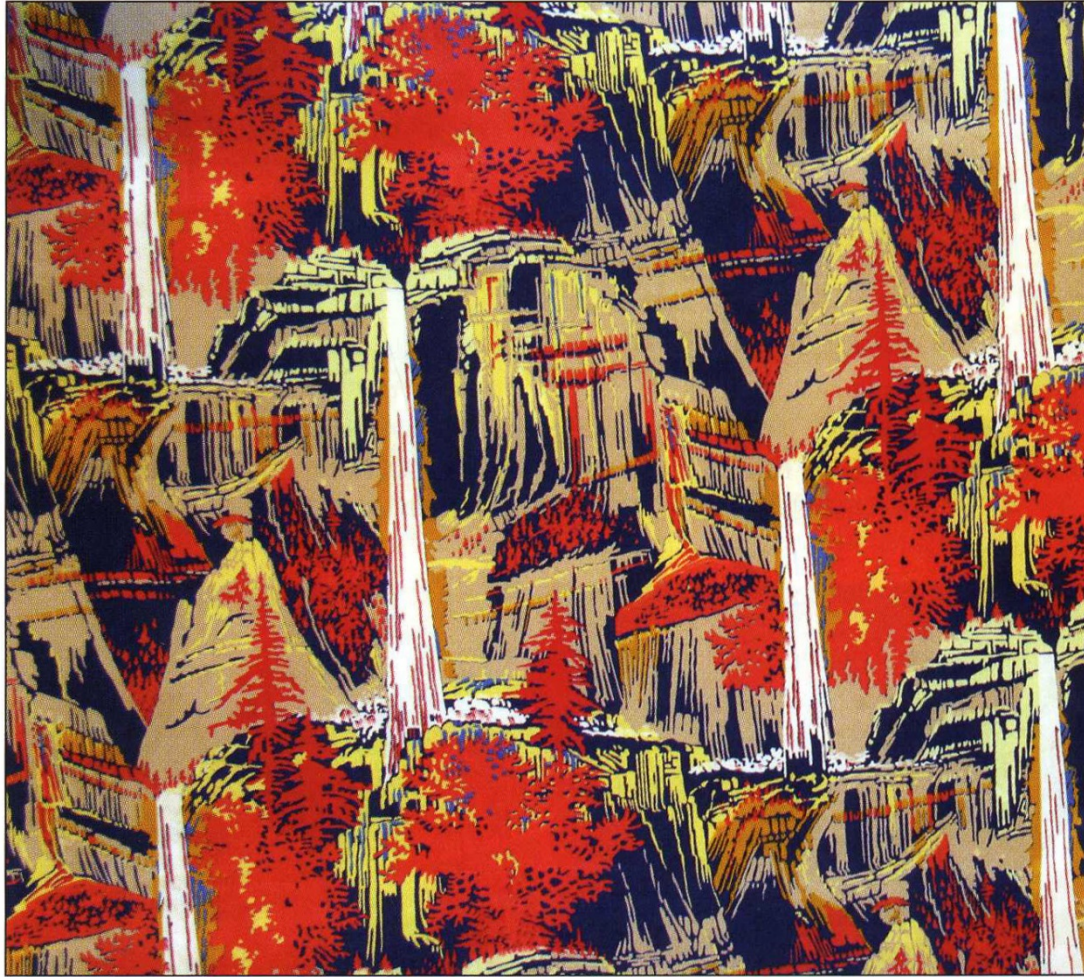
Conservative solid color staple taffeta, satin, and Jacquard evening damasks of the kind produced and consumed in vast quantities. Floral design: yellow rose warp print damask. *Courtesy The Collection of the Newark Museum. Gift of Henry Doherty Silk Company, 1916; Schwarenbeck, Huber & Company, 1916; Doherty & Wadsworth Silk Company, 1916; Phoenix Silk Company, 1916.*



Basic conservative woven plaid and stripe taffeta in muted colors, widely used for dresses, suits, and young women's skirts, 1910–1920. *Courtesy The Collection of the Newark Museum. Gift of the Phoenix Silk Manufacturing Company, New Jersey, 1916.*



Printed crepe de chine Jacquard damask. Small, modest floral designs had perennial appeal in the popular market. Production stages from left: solid color Jacquard damask floral spray; overprinted flowers; dye steamed; final finished fabric. *Courtesy The Collection of the Newark Museum. Gift of the Oriental Silk Company, New Jersey, 1916.*



H. R. Mallinson & Company novel large-scale high fashion print, Bridal Veil Falls, Yosemite; landscape design from the 1927 American National Parks Series. *Courtesy The Collection of the Newark Museum. Museum Purchase 1927. J. Ackerman Cotes Collection (Detail).*



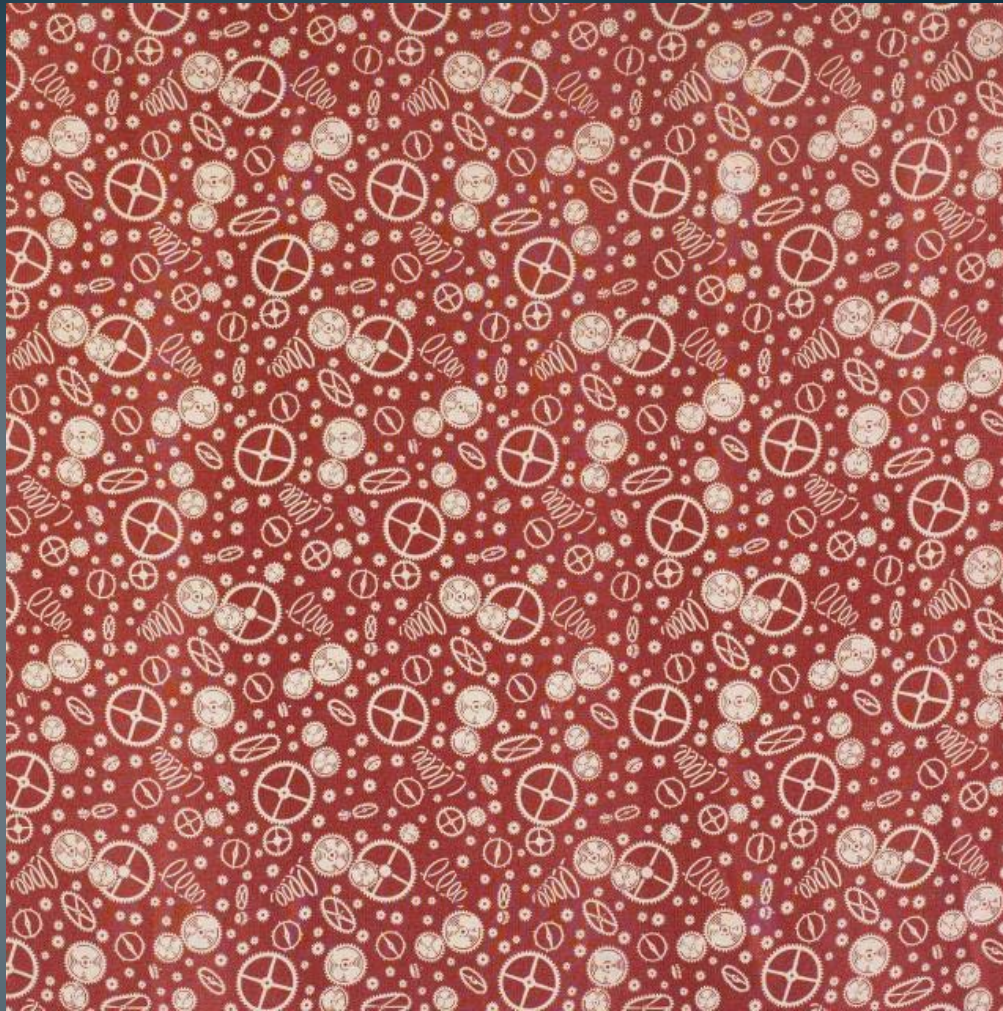
H. R. Mallinson & Company novel large-scale high fashion print Paradise Valley, Mount Rainier; landscape design from the 1927 American National Parks Series.

Courtesy The Collection of the Newark Museum. Museum Purchase 1927.

J. Ackerman Cotes Collection (Detail).

Allentown Art Museum

- <http://www.allentownartmuseum.org/exhibition/silk-industrial-age>



Marshall Field & Co. Inc., manufacturer (American, 1852-2005),
Watch Parts Dress Fabric, from the Technocracy Prints series,
1933, printed silk crepe.

American, Lindbergh's
Trans-Atlantic Flight Dress
or Scarf Fabric, 1927,
printed silk crepe.





William Geskes (1877-1962),
Untitled Jacquard Design,
between 1895 and 1940,
gouache and pencil on paper.

William Geskes (1877-1962),
Untitled Jacquard Design,
between 1895 and 1940,
paint and pencil on paper.









